
THE WHITE PAPER

News updates brought to you by White Reclamation Ltd

April 2009

Plasterboard ban from general landfill sites

New legislation governing the disposal of high sulphate bearing waste comes into effect on 1st April 2009.

Quite simply, wastes such as plasterboard will be banned from general landfill sites accepting bio-degradable wastes. This is because the sulphates in gypsum can breakdown in landfill to produce toxic and odorous hydrogen sulphide gas.

The intention is to encourage the maximum re-use and recycling of gypsum. Producers of construction and demolition waste must now separate gypsum-based material from other wastes so that it can be recycled or re-used. This includes plasterboard waste.

So where do you go from here?

You go to White Reclamation of course because we have planned ahead for you and already identified alternative end markets for your plasterboard waste!

The simplest method of treating gypsum is to separate it from other waste at the point of production; this also facilitates the recycling process. If segregation is an issue, you can send your mixed waste to our Eccles treatment facility for us to segregate any plasterboard material and arrange for it to be disposed of legally, at a premium.

Options

We have been actively working with government agencies and manufacturers to develop end uses and recycling routes for our clients. We offer four options for the recycling of gypsum-based waste, such as plasterboard.

Option 1

As British Gypsum's regional partner we operate their recycling scheme throughout the North West.

Contact us or mark.snowden@bpb.com for more details.

Option 2

Outside British Gypsum's scheme we can recycle plasterboard of any manufacturer back to their factory at competitive rates.

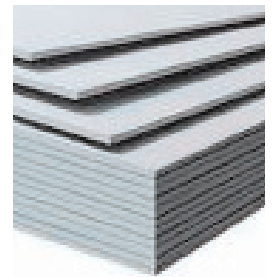
Option 3

We have an agreed protocol to landspread gypsum dust produced from plasterboard on potato crops around the North West.



Option 4

We have an arrangement with MRM, a division of Heidelberg Cement, to provide plasterboard for use in the manufacture of cement products. Their new plant at Knowsley will be operational during April.



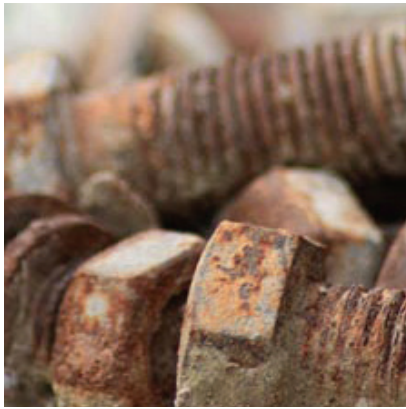
The choice is clear

New legislation can often seem punitive at first glance.

As an established specialist in waste management, we make it our business to help your business in the most cost-effective way. We do this by staying ahead of changes in legislation, anticipating and planning alternative routes, to ensure we can give our clients choice.

Our levels of customer service are first class so you can rely on us to guide you honestly and accurately in the management of your site waste. We know the range of options outlined above offers our clients 100% recycling of their waste plasterboard in a compliant, clear and auditable manner, with obvious benefit to the environment.

£ multi-million investment



£1.2 million will be spent in early April on a new plant to enable us to increase our recycling capacity even further. This new plant will give us greater capability to segregate mixed waste and to cope with higher volumes.

The installation of the new equipment at our Eccles site will take place over a two week period at Eastertime. It is part of a total investment of £3 million by the White Group in 2009 as we work towards achieving our goal to be a Nil Landfill site by 2010.

As a company committed to recycling and the best use of the environment, we are determined to drive towards that goal so that in 2010 we will send absolutely nothing to general landfill. Our processes are becoming increasingly automated to enable us to cope with ever increasing capacities in waste reclamation and recovery.

Further updates on this key strategy will be sent to you during the year, but our clients remain at the forefront of this drive to protect the environment in a realistic and cost-effective manner.

Price Freeze

Despite the £8 per ton increase in landfill tax applied on April 1st 2009, we are pleased to confirm that our charges for construction wastes have been held at 2008 levels. Our increased ability to recycle means that other commercial and industrial waste streams have incurred

only minimal increases. This is further evidence that our work towards achieving our goal of nil landfill in 2010 brings both economical and environmental benefits to our clients.

Call us to see how you can benefit from our services.



New Hall, Liverpool Road, Eccles, Manchester M30 7LJ

Tel: 0161 789 3268 Fax: 0161 785 2130 Email: info@thewhitegroup.co.uk www.thewhitegroup.co.uk